



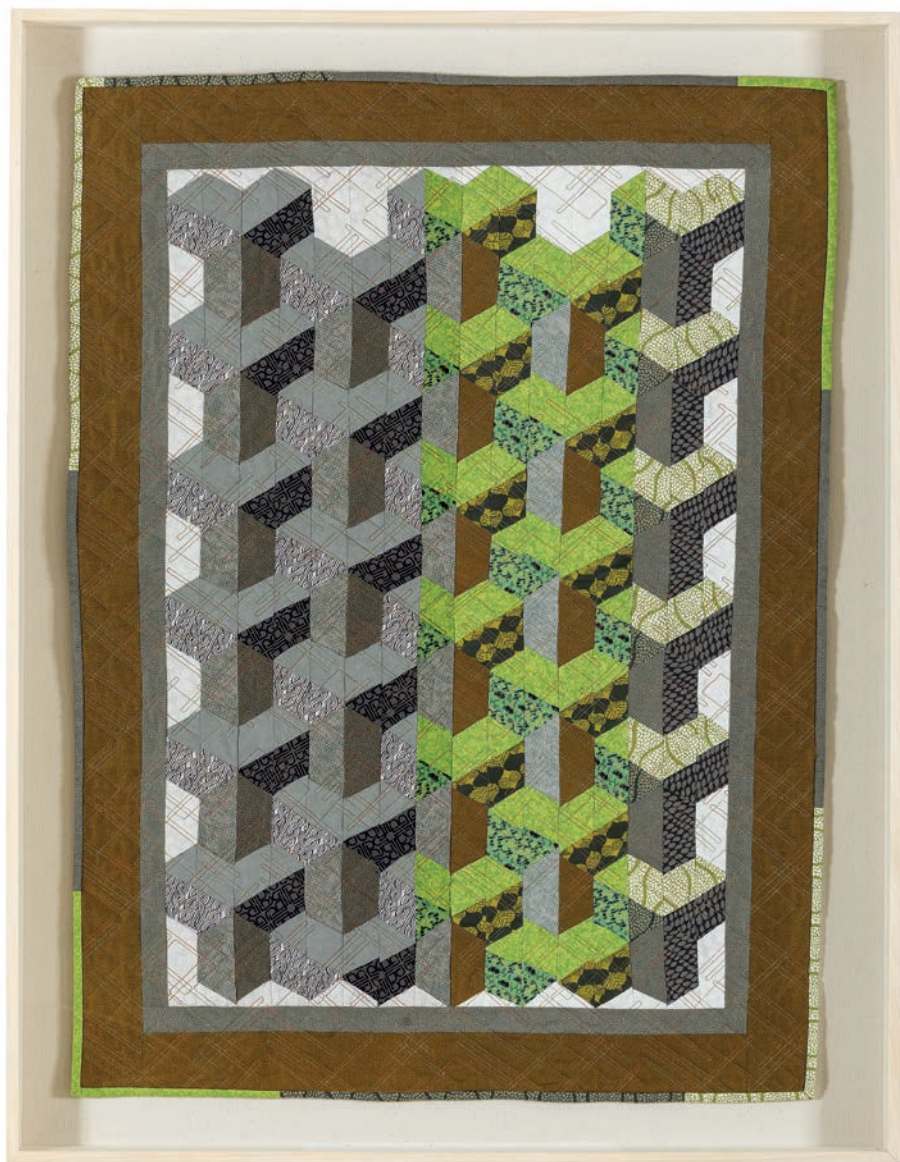
Applied Aesthetics
by Evangelia Simopoulou

Front Cover
Côte d’Azure
250x230

Applied Aesthetics

by Evangelia Simopoulou

DECEMBER 2019 - ALPHA C.K. ART GALLERY



Every colour goes with every colour if the quantities are right.

Joseph Albers

In my life I've learned to observe, absorb, and appreciate objects in my environment that kindle my senses and rouse my imagination

Handmade quilts evoke general memories of olden times or special occasions represented by the fabric used to create them and the care in the design the quilt maker conceives.

My creations result from my everyday inspirations and curiosities, and my dedication to the traditions, craftsmanship and care of this centuries-old art. All quilts are uniquely designed and crafted, and are made with two layers of 100% cotton fabric with bamboo or cotton batting in between.

Evangelia Simopoulou
December 2019



reverse detail

Looking at Your Garden
245x200



Up the Garden Path
174x132



reverse detail



reverse detail

May the Force Be With You II
177x134



My Space Crystal
104x102

reverse detail





reverse detail

Stand By Me
250x230



Simply Squares
247x205

reverse detail



reverse detail

There Is No Place Like Home
182x135



Optical Illusion
200x148

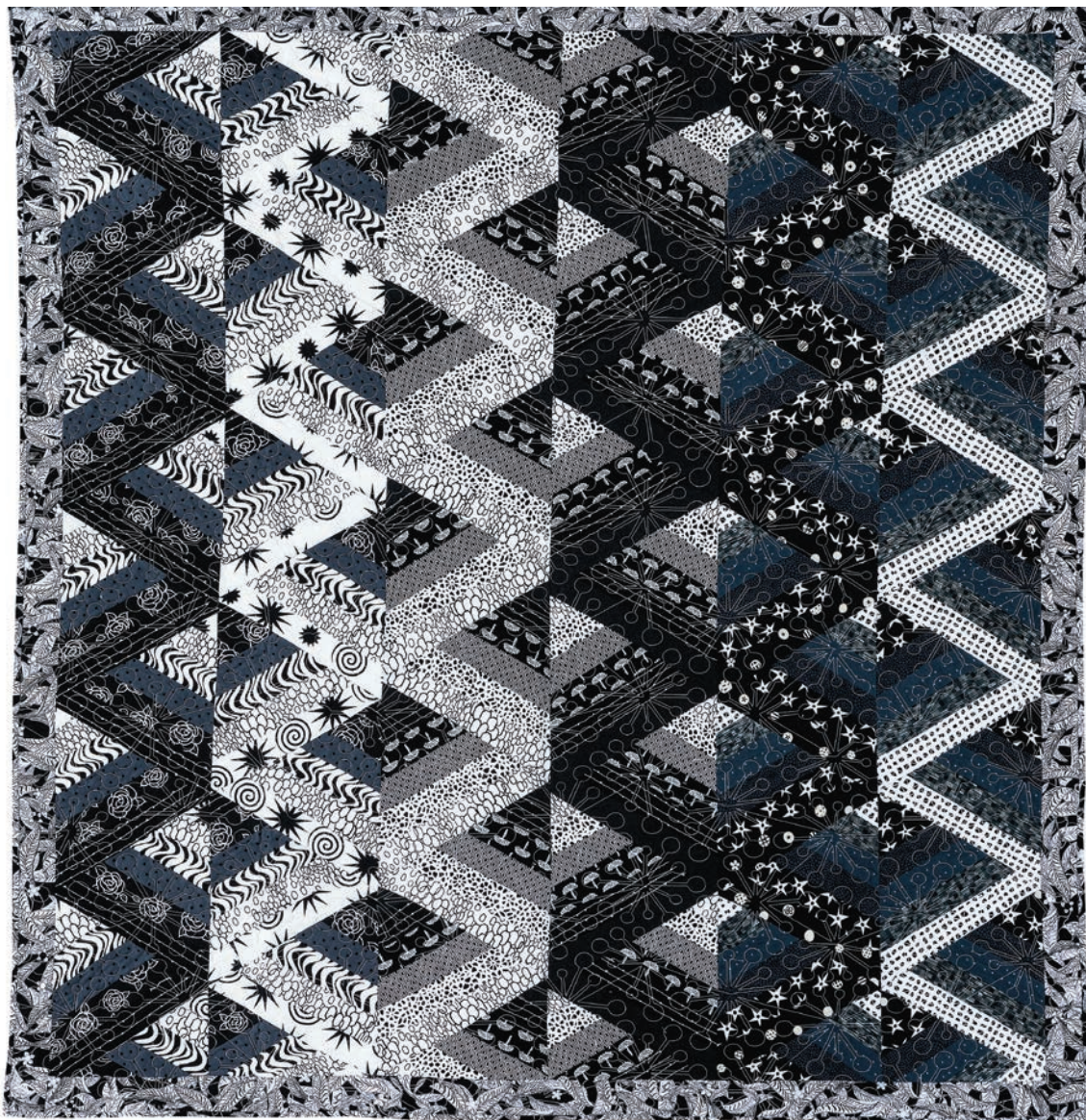


reverse detail



reverse detail

Tranquility and Harmony
160x126



Construction
155x145

reverse detail





reverse detail



May the Force Be With You I
177x127



My Little Venice
179x113

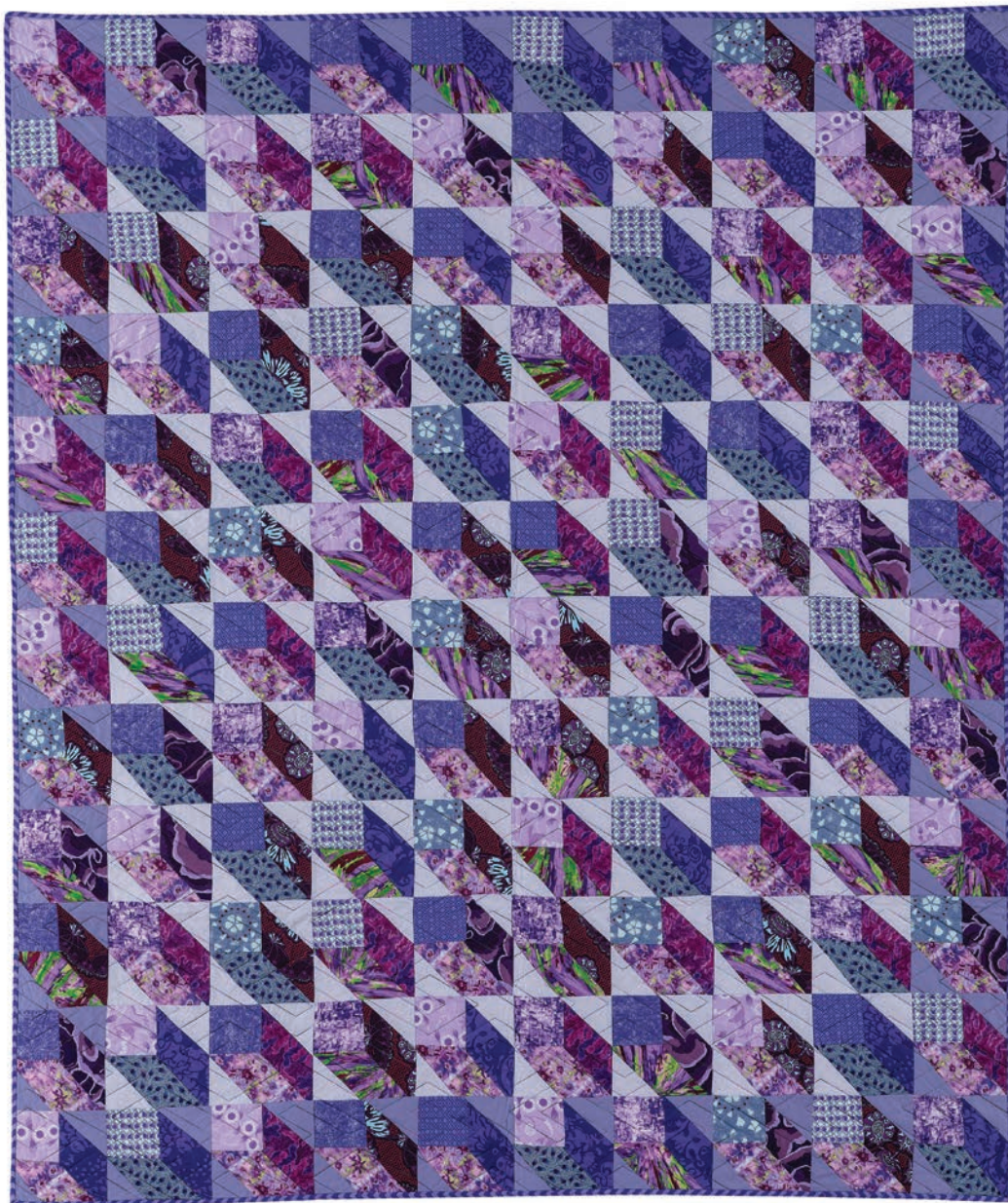


reverse detail



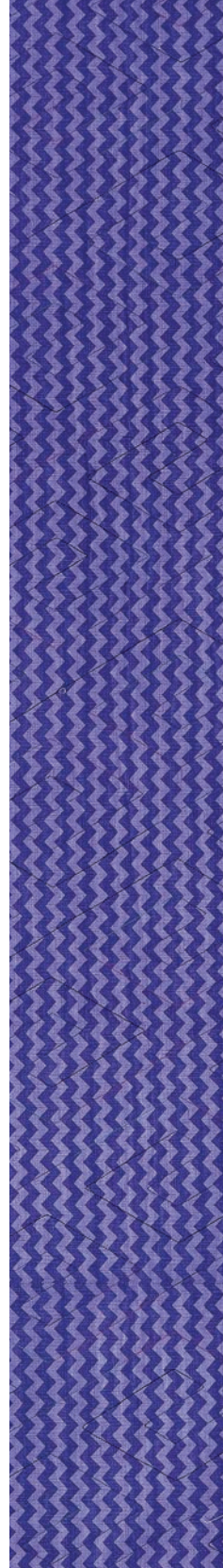
reverse detail

Elements of Design
187x152



Restore Attention
175x147

reverse detail





reverse detail

Flower Pots
156x130



Colours
166x106



reverse detail



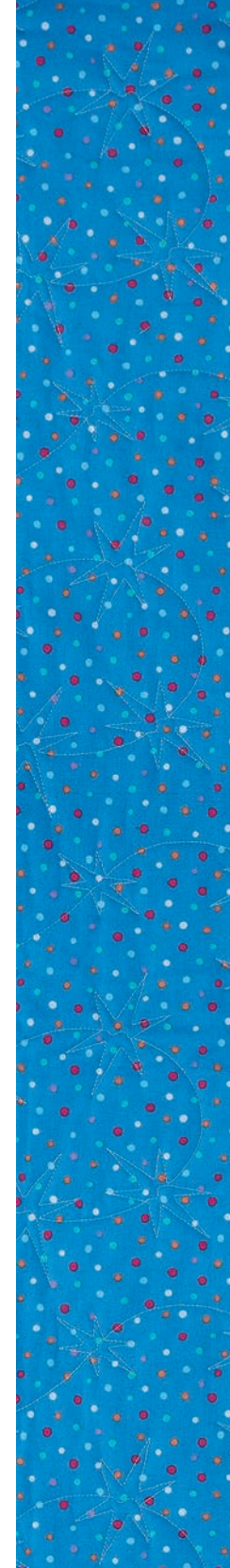
reverse detail

Fairy Tales
165x130



Circus
112x86

reverse detail





reverse detail

Pure Green
140x120



Jungle Story
120x98

reverse detail



Sky Way
90x115
(framed)

Alpha C.K.

ART GALLERY

Makarios Ave. & 3 Papanikoli str. 1077 Nicosia Cyprus
T +357 22751325 info@ackgallery.com
www.ackgallery.com

